

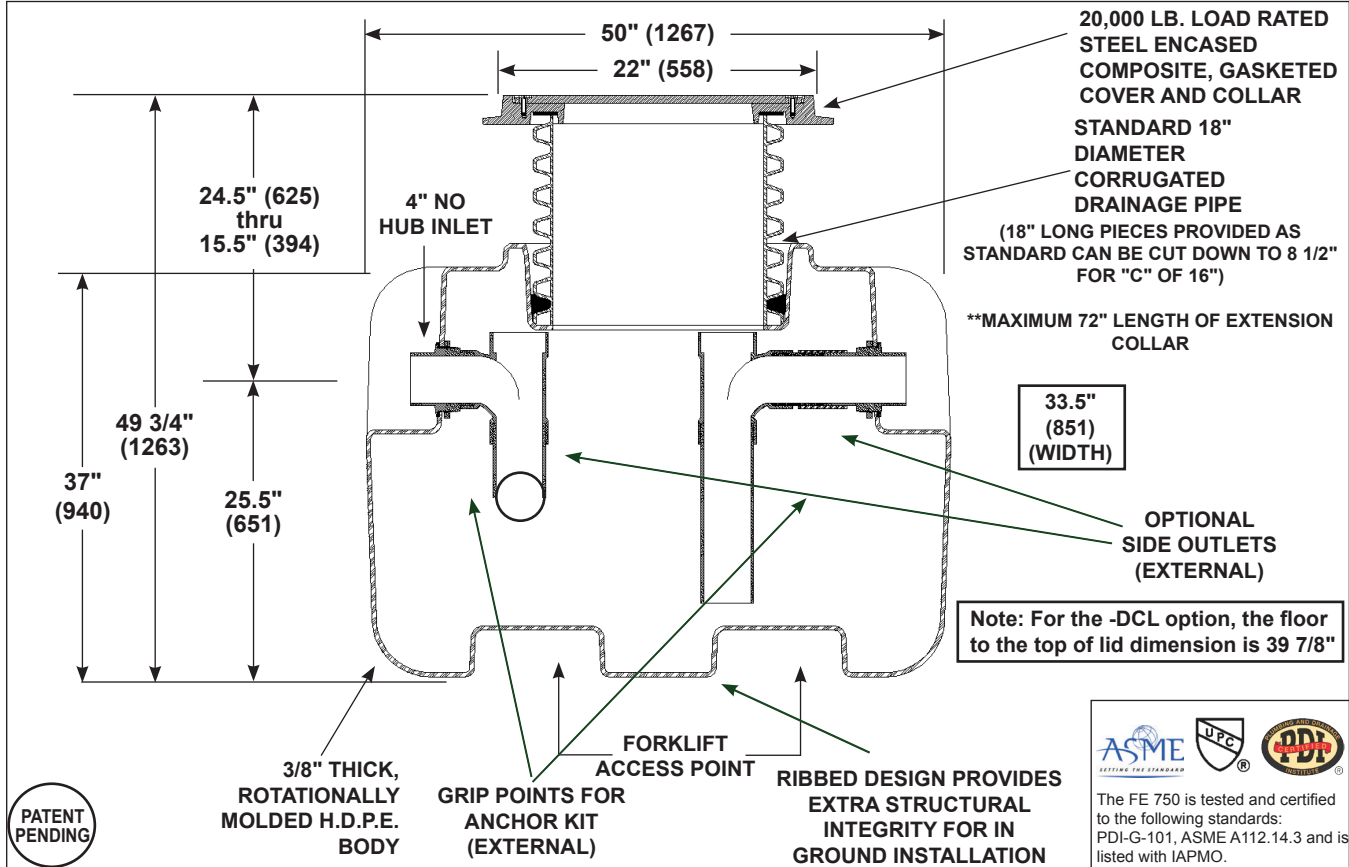
Project Name: _____

FOG Enforcer FE 750

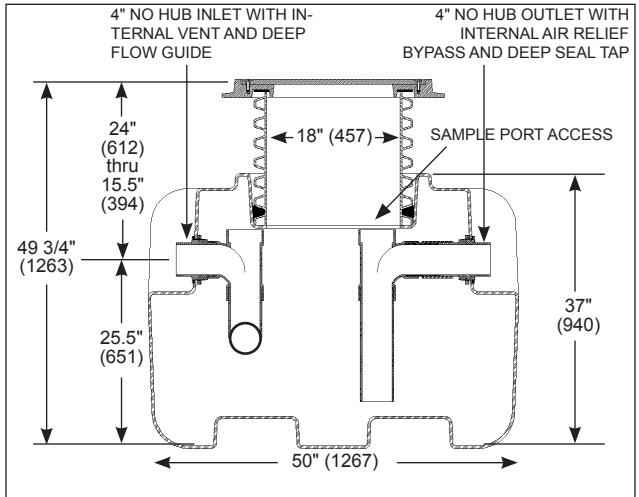
LARGE CAPACITY HDPE HYDROMECHANICAL GREASE INTERCEPTOR

Specification: FOG ENFORCER FE750, 75 GPM hydromechanical grease interceptor with 750 lb. grease design capacity. Interceptor has a limited lifetime warranty and is made in the USA out of seamless, rotationally molded High Density Polyethylene with 3/8" uniform wall thickness. Interceptor designed for above or below ground installation. Interceptor includes an adjustable lid system, internal flow control, sample port access, and multiple outlet options. The steel encased composite lid provides a water / gas tight seal and has a minimum of 20,000 lbs. load capacity. The lid is designed in accordance with the loading requirements of AASHTO H20.

Function: Used in restaurants, kitchens, institutions, industrial facilities such as food processing and packaging plants and other types of food processing areas where fat, oil and grease (FOG) drains with the wastewater. Narrow width permits access through doorways and down stairwells. High Density Polyethylene construction ensures a lightweight installation process (two people can move and install it).



PATENT PENDING



*Note: The FE 750 does not meet PDI standard if outfitted with an internal flow control (-OP suffix). The PDI standard is only valid for the external flow control fitting.

MODEL NO.	GPM (Flow Rate)	GREASE DESIGN CAPACITY (Lbs.)	LIQUID CAPACITY (GAL)	SHIPPING WEIGHT (Lbs.)
FE 750	75	750	140	150

- SUFFIX**
- AK High water anchor kit (set of two)
 - C Lid extension (specify "C" dimension required) (Max. of 72")
 - CL Holdown brackets for lid (when installed above ground)
 - DCL Direct Connect Lid (lid bolted to top of body)
 - DI Ductile iron lid & collar
 - FL-C Membrane clamp kit
 - F6 6" No Hub Inlet / Outlet connection
 - HLA High level alarm
 - LHSI 4" no hub inlet on left hand side
 - LHSO 4" no hub outlet on left hand side
 - OP Internal flow control*
 - RHSI 4" no hub inlet on right hand side
 - RHSO 4" no hub outlet on right hand side
 - SP External Sample Port (for existing construction. Inlet and Outlet on the same level)
 - SP-OF External Sample Port (for new construction. Inlet higher than the outlet).
 - T Female threaded connections
- OPTIONAL VARIATIONS**



Job Name: _____ Page No: _____
 Section No: _____ Contract: _____
 Schedule No: _____ Purchase Order No: _____